



TAFE NSW

Community Services

Program Areas

Introduction to Migrant Services
A South East Asian Community Forum
SEVA International

Introduction

- TAFE (Technical and Further Education) NSW is Australia's largest registered training organisation (RTO) and is among the biggest in the world.
- TAFE NSW prides itself on offering quality education tailored to meet the needs of industry, community and individuals.

NEW SOUTH WALES
DEPARTMENT
OF EDUCATION
AND TRAINING



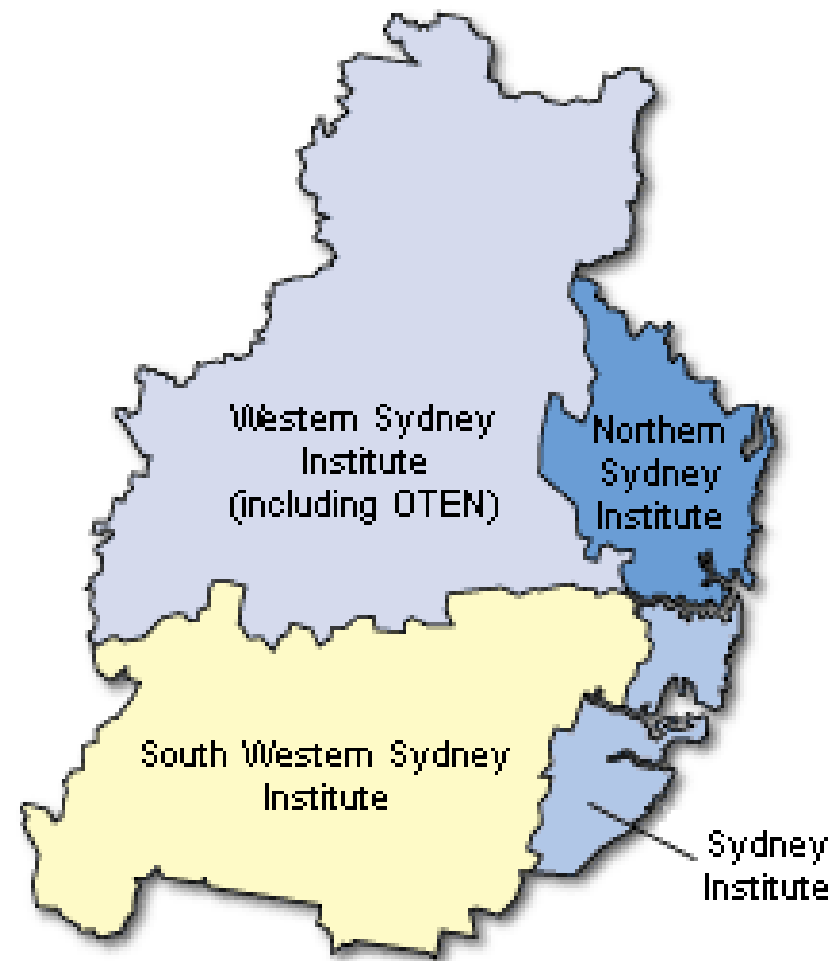
TAFE NSW Community Services, Health, Tourism and Recreation Curriculum Centre
Supporting excellence in vocational education and training

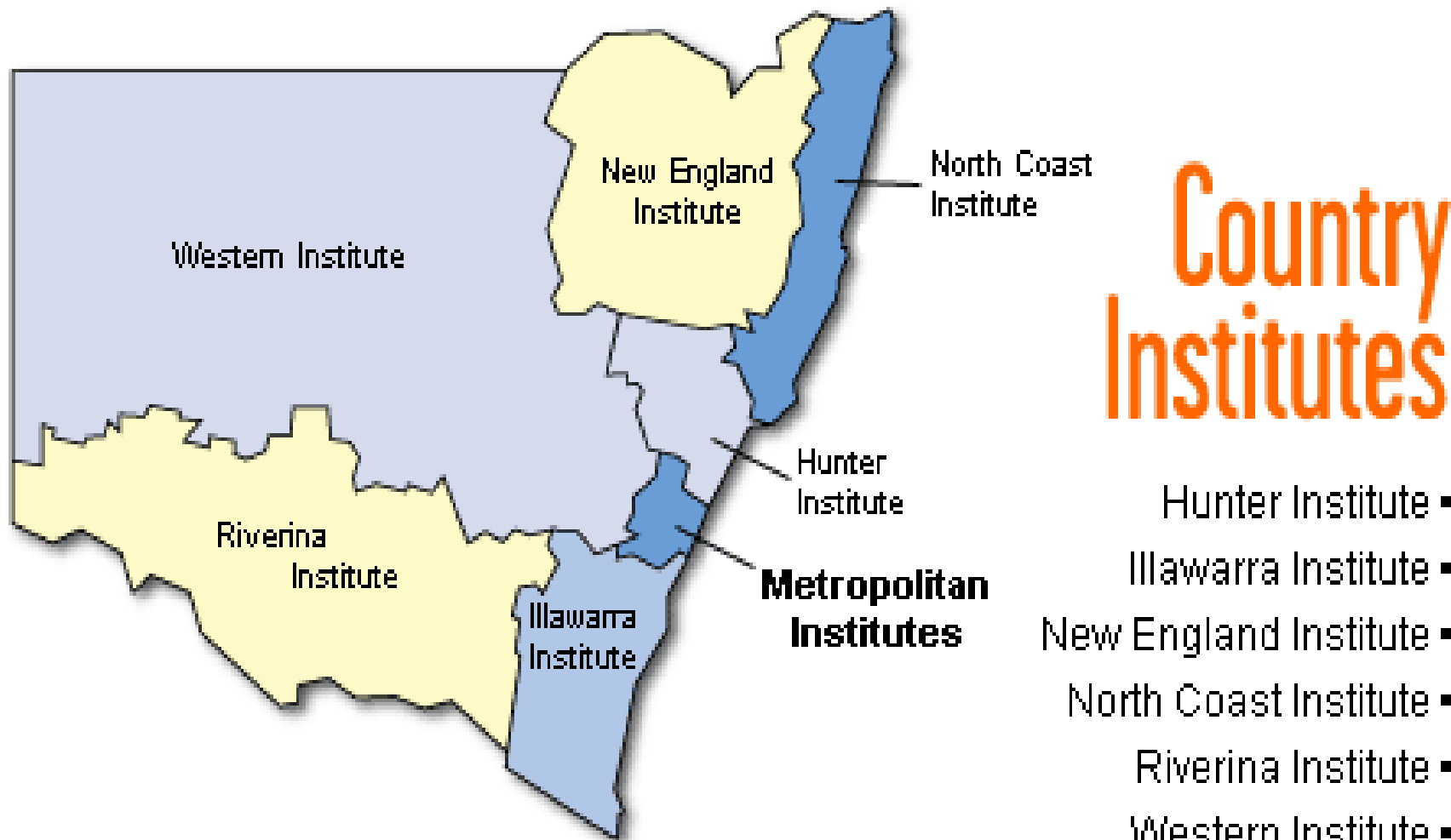
TAFE NSW Institutes

- There are 10 Institutes within TAFE NSW delivering a wide range of nationally recognised courses at more than 130 metropolitan and regional campuses.
- Each TAFE campus is an integral part of the community with a range of well-equipped and well-maintained modern facilities.

Metropolitan Institutes

- Northern Sydney Institute
- South Western Sydney Institute
- Sydney Institute
- Western Sydney Institute (including OTEN)





Country Institutes

- Hunter Institute ▪
- Illawarra Institute ▪
- New England Institute ▪
- North Coast Institute ▪
- Riverina Institute ▪
- Western Institute ▪

Australia's vocational education and training system

- Training Packages are a key feature of the vocational education and training (VET) system in Australia.
- They are part of the National Training Framework that aims to make training and regulatory arrangements simple, flexible and relevant to the needs of industry.

Training Packages

- Training Packages are developed by industry for industry.
- Training Packages encourage training at work.
- Training Packages provide many pathways to competency and qualifications.

Benefits of Training Packages

- Meet the needs, requirements and standards of industry.
- Qualifications are consistent and nationally recognised.
- Qualifications are awarded through the direct assessment of competencies.
- Employers and students have the flexibility to choose how, when and where the training is undertaken.

National Qualifications

- Sitting within the Australian Qualifications Framework (AQF) national qualifications are awarded to a learner when they are assessed as achieving a combination of units of competence that provides a meaningful outcome at an industry level.
- Each qualification consists of core and/or elective units of competence.

TAFE NSW Qualifications

- Selected Study Programs
- Statement of Attainments
- Certificate I, II, III and IV qualifications
- Diploma and Advanced Diploma qualifications
- Graduate Certificate and Advanced Graduate Certificate qualifications
- NSW accredited courses

Flexible Delivery of Training

Training strategies include:

- Classroom based learning
- Work place learning
- Distant education
- Electronic and on line learning
- Group or individual learning
- Combinations of these strategies
- Recognition of prior learning

NEW SOUTH WALES
DEPARTMENT
OF EDUCATION
AND TRAINING



TAFE NSW Community Services, Health, Tourism and Recreation Curriculum Centre
Supporting excellence in vocational education and training

Support Services

Available to Students

- Services for people from language backgrounds other than English including Multicultural Education Coordinators
- Aboriginal programs
- Children's centres
- Counselling and career services
- Disability services
- Financial assistance
- Language, literacy and numeracy support
- Library services and outreach programs



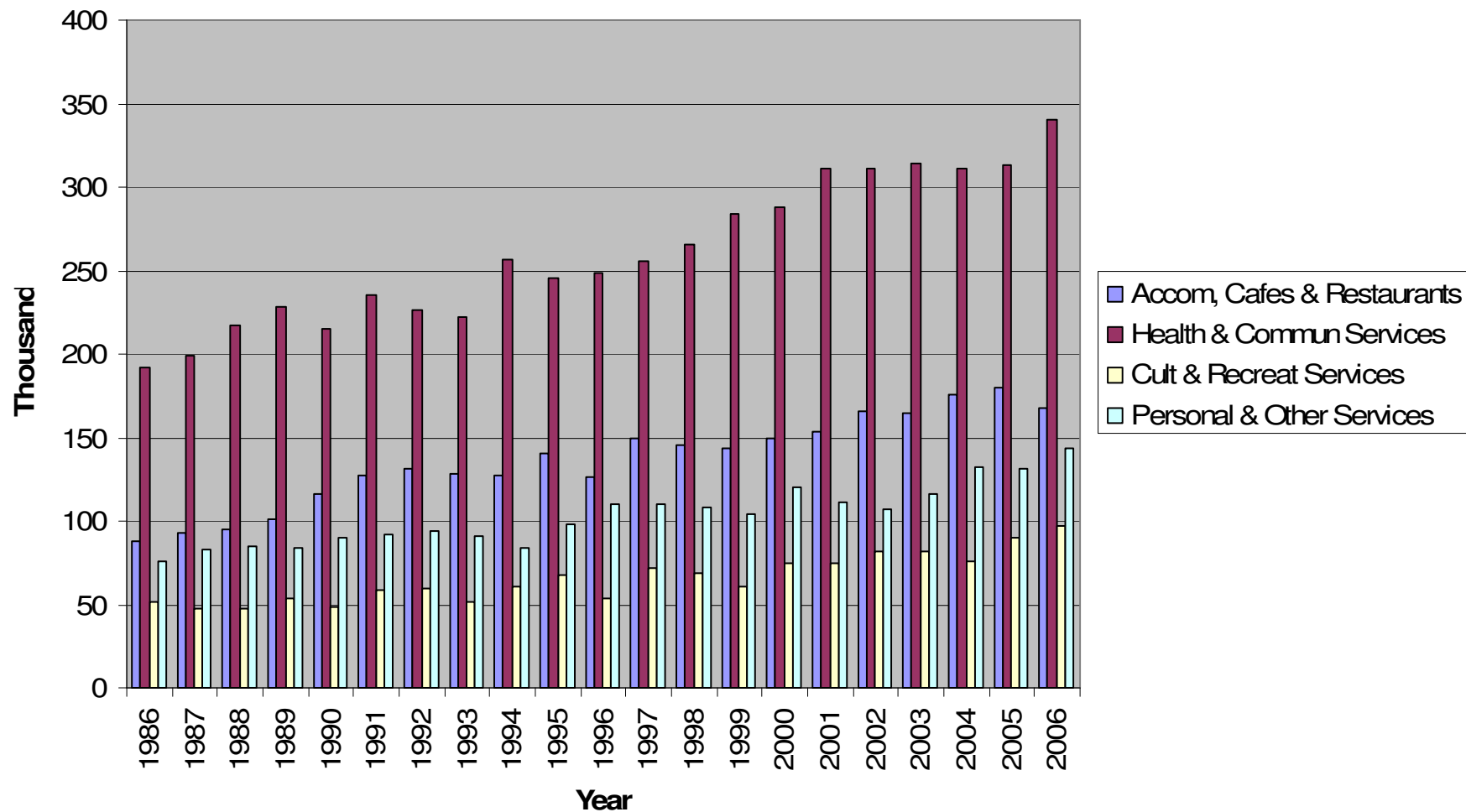
Community Services Program Areas

- Aged Care
- Home and Community Care
- Community Services Work
- Community Management / Community Development
- Disability Work
- Youth Work
- Mental Health Work / Alcohol and Other Drug Work
- Marriage Celebrancy
- Lifestyle and Leisure / Recreation Programming
- Fitness / Community Recreation / Sport and Recreation

Industry Trends

- The Community Services and Health (CS&H) industry has experienced strong growth and will continue to do so with the ageing profile of the current workforce and of the general population.
- The CS&H industry trends in Australia indicate employment growth of 3% in 2006 – 2007.

Employment in NSW – Selected Industries



AND TRAINING



TAFE NSW Community Services, Health, Tourism and Recreation Curriculum Centre
Supporting excellence in vocational education and training

Occupational trends

NSW highlights:

- Sustained demand for child care workers, especially in metropolitan areas.
- High demand for aged care workers, particularly in community care settings.
- Anticipated increases in service provision of community development & welfare work, particularly in mental health & alcohol and other drugs work.

Community Services Job Prospects

Occupation	Average Weekly Wage	Status of jobs (% Full-Time)	Job Prospects
Aged & disabled carers	650	35	good
ATSI health worker	2708	89	good
Child & youth residential carers	650	35	good
Child care worker	578	51	good
Hostel & refuge worker	650	35	good
Aides & personal care assistants	650	43	good
Youth & disability worker	807	63	good
Welfare & community worker	950	66	good



TAFE NSW Community Services, Health, Tourism and Recreation Curriculum Centre
Supporting excellence in vocational education and training

Additional Information

- TAFE NSW Website
<http://www.tafensw.edu.au>
- Community Services Industry Skills Council
<http://www.macyourcareer.com.au>
- Australian Apprenticeships and Traineeships
<http://www.australianapprenticeships.gov.au>
- Employment and Workplace Relations Services
<http://www.workplace.gov.au/workplace/>

Additional Information

- Trades Recognition Australia (TRA)
- <http://www.workplace.gov.au/workplace/Individual/Migrant/TRA/>
International skills assessment for people intending to migrate to Australia
Domestic skills assessment for Australian Recognised Trade Certificates
New skills assessment service for people intending to migrate to Australia (certain countries only)
- National Office of Overseas Skills Recognition
Provides official information and advice on the comparability of overseas qualifications with Australian qualifications
- (<http://www.workplace.gov.au/workplace/Individual/Migrant/NationalOfficeofOverseasSkillsRecognitionNOOSR.htm>)